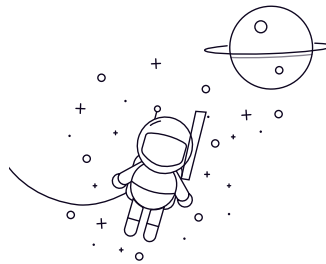


# GAC..T



select	Inquiry	Bearing Number	Overall dimension [mm]									Rated load [kN]		Weight kg
			d	D	B	C	T	dk	S	rsr <sub>1s</sub> max	a°	live load	Static load	
GAC25T	25	47	15	14	15	42	0.6	1	2.5	89	225	0.148		
GAC28T	28	52	15	15	16	47	1	1	2	100	270	0.186		
GAC30T	30	55	17	15	17	49.5	1.3	1	4.5	110	285	0.208		
GAC32T	32	58	17	16	17	52	2	1	2	125	320	0.241		
GAC35T	35	62	18	16	18	55.5	2.1	1	4	135	340	0.268		
GAC40T	40	68	19	17	19	62	2.8	1	3.5	160	400	0.327		
GAC45T	45	75	20	18	20	68.5	3.5	1	3	190	470	0.416		
GAC50T	50	80	20	19	20	74	4.3	1	1.5	215	540	0.455		
GAC55T	55	90	23	20	23	82	5	1.1	4	250	630	0.645		
GAC60T	60	95	23	21	23	88.5	5.7	1.1	2.5	285	710	0.714		
GAC65T	65	100	23	22	23	93.5	6.5	1.1	1	315	790	0.759		
GAC70T	70	110	25	23	25	102	7.2	1.1	2	360	900	1.04		
GAC75T	75	115	25	24	25	107	7.9	1.1	1	395	980	1.12		
GAC80T	80	125	29	25.5	29	115	8.6	1.1	3.5	450	1120	1.54		
GAC85T	85	130	29	26.5	29	122	9.4	1.1	2	495	1240	1.61		
GAC90T	90	140	32	28	32	128.5	10.1	1.5	3.5	550	1380	2.09		
GAC95T	95	145	32	29.5	32	135	10.8	1.5	2	610	1530	2.22		
GAC100T	100	150	32	31	32	141	11.6	1.5	0.5	670	1680	2.34		
GAC105T	105	160	35	32.5	35	148	12.3	2	2	740	1850	2.93		
GAC110T	110	170	38	34	38	155	13	2	3	810	2020	3.68		
GAC120T	120	180	38	37	38	168	14.5	2	0.5	955	2390	3.97		
GAC130T	130	200	45	43	45	188	18	2.5	1	1240	3110	5.92		

## GAC..T

---

GAC140T	140	210	45	43	45	198	19	2.5	1	1310	3270	6.33
GAC150T	150	225	48	46	48	211	20	3	1	1490	3730	8.01
GAC160T	160	240	51	49	51	225	20	3	1	1690	4240	9.79
GAC170T	170	260	57	55	57	246	21	3	1	2080	5200	12.3
GAC180T	180	280	64	61	64	260	21	3	1	2440	6100	17.4
GAC190T	190	290	64	62	64	275	26	3	0.5	2620	6560	18.2
GAC200T	200	310	70	66	70	290	26	3	1.5	2940	7360	23.8